

Distribution & Logistics

4.5% of the Vermilion County economy is comprised of transportation and logistics specialists ranging from food and institution suppliers to retail distributors. We currently have 1,395,940 SF of occupied facilities in the area. A strong transportation network of highway, rail and air transportation provide a solid base for continued growth in this sector.

Member Spotlight: McLane Midwest Company, Inc.



McLane Midwest Company, Inc.
www.mclaneco.com

As a leading provider of grocery and foodservice supply chain solutions, McLane buys, sells, and delivers more than 40,000 consumer products – including foods, beverages, household items, automotive products and more- to thousands of retail locations across the U.S., including such familiar places as Wal-Mart, Target, CVS, 7-Eleven, Chevron-Texaco, Pizza Hut, Taco Bell and Circle K. The McLane Midwest Grocery division opened in Danville in 1993 and employs 700+ teammates who are committed to doing whatever it takes to make our customers successful. McLane is dedicated to living, working and investing to improve the communities we serve.

Following are the location factors that support these existing businesses and encourage many new locations and expansions each year.

Operating Costs

Labor Cost Comparison

Utilities - Danville

Electricity

Natural Gas

Water

Sanitation

Solid Waste

Telecommunications

Utilities - Vermilion County

Electricity

Water

Sanitation

Taxes

Local Taxes

Illinois Taxes

Grants, Loans & Incentives

Local Programs

Community Development

Cost/Availability of Sites and Buildings

Operating Conditions

Labor Statistics

Unemployment Rates

Workforce Information Update & Charts

Projected Growth

Average Commuting Patterns

Quality of Work Force

Current Experienced Labor Force in Vermilion County

Labor Management Relations

Work Stoppage Data

Transportation

Proximity to Major Markets

Mileage Chart

Map

Highway Access

Motor Carriers

Rail Carriers

Chart

Rail Lines Map

Regional Air Service

Area Map

Vermilion County

Champaign/Urbana

Bloomington

Indianapolis

Quality of Life

Climate and Weather

Crime Statistics

Crime Rate Comparison

Arrest Rate Comparison

Drug Crime Arrest Comparison

Operating Costs

Distribution & Logistics Labor Cost Comparison

| Job Title | Local Avg. Annual Wage* | National Avg. Annual Wage** |
|----------------------------------|-------------------------|-----------------------------|
| Driver – Tractor | \$35,110 | \$34,278 |
| Operator – Industrial (Forklift) | \$32,344 | \$27,872 |
| Warehouse – Order/Fillers | \$28,891 | \$18,959 |
| Warehouse – Stocker/Handler | \$27,123 | \$22,142 |

*Local data from Vermilion Advantage 2009 Wage & Benefit Survey

**National data from U.S. Dept. of Labor, Bureau of Labor Statistic

Utilities for Danville, Illinois: Electricity

In an effort to promote competition among electric power suppliers, Illinois lawmakers approved the Electric Service Customer Choice and Rate Relief Law of 1997. Today, commercial and industrial customers have a number of retail electric suppliers to choose from.

Illinois customers have three options for meeting their electric supply need in 2007 and beyond:

BGS – Basic Generation Service

RTP – Real Time Pricing

RES – Retail Electric Supplier

For more detail, see: <http://www2.ameren.com/business/rates/ratesPost2006AMIP.aspx>

As your delivery services company, your Ameren Illinois utility is responsible for the infrastructure that delivers electric from the power plant to your door. Their commitment to quality, around-the-clock service remains the same regardless of your power supplier.

For a list of those suppliers registered, certified and approved by the Illinois Commerce Commission go to: <http://www.icc.illinois.gov/utility/>

Utilities for Danville, Illinois: Natural Gas

Rates for customers that do not wheel gas directly from the pipeline include:

SC51: Residential Gas Service Rate

SC63: Small Volume Firm Gas Service

SC64: Intermediate Volume Gas Service

SC65: Large Volume Firm Gas Service

SC66: Seasonal Gas Service

SC76: Transportation of Customer-owned Gas and Best Effort Back Up

SC90: Contract Service

For more information, visit <http://www2.ameren.com/business/rates/ratesGasFullSrvDeIAMUEIP.aspx>.

Utilities for Danville, Illinois: Water

| | |
|--------------------------------|--|
| Supplier: | Aqua Illinois, Inc., www.aquaininois.com |
| Plant capacity: | 14.0 MGD |
| Average demand: | 7.8 MGD |
| Peak demand: | 10.28 MGD |
| Vermilion County service area: | Danville, Tilton, and unincorporated areas adjacent to Danville; wholesale water to Westville and Catlin |
| Storage capacity: | Finished storage at plant: 1.25 MG Finished storage at distribution system: 8.8 MG |
| Production facilities: | <ul style="list-style-type: none"> • 14 MGD, state-of-the-art, modern treatment facility, went into operation 1992, current average pumpage 8 MGD • Split treatment, clarification - lime softening facility – nitrate removal (ion exchange) pH control with lime and CO₂ allows for water stability and corrosion control • Three billion gallon reservoir as source of supply |
| Source: | Lake Vermilion (supplied by North Fork of North Vermilion River) |
| Capacity: | 3 billion gallons |

Rates

| | Cubic feet per month | Rate per 100 cubic feet |
|--------------------------------------|----------------------|-------------------------|
| For the first... | 100 | \$4.3908 |
| For the next... | 900 | \$3.1850 |
| For all over 1,000 | 10,000 | \$2.275 |
| Large general service user (>35,000) | by contract only | \$1.138 |

Water Quality - Untreated

| | Raw water quality, 2006 | Finished water quality, 2006 |
|---------------|-----------------------------------|-------------------------------|
| Turbidity: | 2.0 – 217 NTU | 0.08 NTU (avg.) |
| | Daily readings (low – high) | Overall annual averages |
| Hardness | 142-337 mg/l as CaCO ₃ | 151 mg/l as CaCO ₃ |
| Alkalinity: | 85-275 mg/l | 72 mg/l |
| pH: | 7.56-8.68 pH units | 9.43 pH units |
| Total solids: | N/A | 209 mg/l |

Water Quality - Treated

| Average analysis of treated water | |
|-----------------------------------|-----------------------------------|
| Average pressure in system: | 50 psi |
| Ranges of treated water: | |
| Turbidity: | 0.06-0.11 NTU |
| Monthly averages (low – high): | |
| Alkalinity: | 50-72 mg/l |
| Fluoride: | 0.91-1.12 mg/l |
| Iron: | <0.01 mg/l |
| Hardness: | 104-160 mg/l as CaCO ₃ |

Utilities for Danville, Illinois: Sanitation

Supplier: Danville Sanitary District
Type of treatment process: Secondary activated sludge with 3rd stage filters and sludge is land applied
Capacity: 16.000 MGD
Current demand: 8.5 MGD
Excess capacity: 7.5 MGD
Present BOD load: 9,951 lbs/day
Design BOD load: 33,360 lbs/day

Utilities for Danville, Illinois: Solid Waste

| | | |
|------------------|-------------------------------|--------------------------------------|
| Suppliers: | Brickyard Disposal (Danville) | Illinois Landfills, Inc. (Hoopeston) |
| | EPA permitted | EPA permitted |
| Capacity: | 9,355,539 cubic yards | 11,724,587 cubic yards |
| Life expectancy: | 22+ years | 100+ years |

Current tipping fees at Brickyard Landfill and Illinois Landfill are \$49.00 per ton with a 2-ton minimum. In addition, an Environmental fee of \$5.00 per load and a fluctuating Fuel Recovery fee that is currently at 3.72 % are added to the total charge.

Utilities for Danville, Illinois: Telecommunications

AT&T Inc.

The new AT&T (formerly SBC) delivers an unsurpassed portfolio of traditional and IP-based voice, broadband internet, data transport, wireless and video services. The service area includes Danville and the southern two-thirds of Vermilion County. Fiber optics deployment in all directions from the Danville central office extended to the central dispatch offices in Eastgate; north to Newell Road; south to Hegler; Oakwood in the west and Southgate in the southeast. Find more information on the web at www.att.com

Cellular One of East Central Illinois

Cellular One, the only locally operated cellular service provider, offers the latest in telecommunications technology, including nationwide cellular phone service and high speed wireless internet for the home or business. Service plans are designed to meet the needs of East Central Illinois residents. More information is available at www.cellular1.net

AT&T Mobility (formerly Cingular Wireless)

Cingular Wireless is the largest wireless company in the United States, with more than 54 million subscribers who use the nation's largest digital voice and data network. Cingular is dedicated to providing customers in Central Illinois with wireless technology designed to enrich their lives. Find more information on the web at www.att.com

Verizon

Serving Bismarck, Alvin, Henning, and Hoopeston, including the north, northwest portion of the county; Rossville and central to northeast county; Sidell and southwest corner of county.

Verizon Wireless

Verizon Wireless is the nation's leading provider of wireless communications, with the largest nationwide wireless voice and data network and 37.5 million customers. Verizon Wireless offers customers in Central Illinois the very latest in wireless communications technology with a high level of customer service, broad range of equipment and service plans to suit every need, all backed by the company's Worry Free GuaranteeSM. Find more information on the web at www.verizonwireless.com

Utilities for Vermilion County, Illinois: Electricity

| | Supplier | System Capacity | Peak System Demand |
|------------|----------------|-----------------|--------------------|
| Catlin | Ameren (CILCO) | 12,500 KW | 4,000 KW |
| Georgetown | AmerenIP | 4,441,000 KW | 4,055,000 KW |
| Hoopeston | Ameren (CIPS) | 18,900 KW | 15,048 KW |
| Westville | AmerenIP | 4,441,000 KW | 4,055,000 KW |
| Oakwood | Ameren (CILCO) | 12,500 KW | 3,000 KW |
| Potomac | Ameren (CIPS) | 8,400 KW | 3,957 KW |
| Ridge Farm | AmerenIP | 4,441,000 KW | 4,055,000 KW |
| Rossville | Ameren (CIPS) | 10,800 KW | 2,980 KVA |
| Tilton | AmerenIP | 4,441,000 KW | 4,055,000 KW |

Utilities for Vermilion County, Illinois: Water

| | Supplier | Pumping Capacity | Average Demand | Peak Demand | Storage Capacity |
|------------|-----------------------|------------------|----------------|---------------|------------------|
| Catlin | Aqua Illinois, Inc. | 14,000,000 GD | 7,800,000 GD | 10,280,000 GD | 9,800,000 G |
| Georgetown | City of Georgetown | 2,000,000 GD | 356,000 GD | 450,000 GD | 600,000 G |
| Hoopeston | City of Hoopeston | 2,880,000 GD | 700,000 GD | 900,000 GD | 625,000 G |
| Westville | Aqua Illinois, Inc. | 14,000,000 GD | 7,800,000 GD | 10,280,000 GD | 9,800,000 G |
| Oakwood | Village of Oakwood | 300,000 GD | 140,000 GD | 225,000 GD | 205,000 G |
| Potomac | Village of Potomac | 175,000 GD | 70,000 GD | 85,000 GD | 60,000 G |
| Ridge Farm | Village of Ridge Farm | 288,000 GD | 100,000 GD | 155,000 GD | 60,000 G |
| Rossville | Village of Rossville | 756,000 GD | 125,000 GD | 200,000 GD | 150,000 G |
| Tilton | Aqua Illinois, Inc.* | 14,000,000 GD | 7,800,000 GD | 10,280,000 GD | 9,800,000 G |

Utilities for Vermilion County, Illinois: Sanitation

| | Supplier | Treatment Process | Capacity | Current Demand | Excess Capacity | Present BOD Load | Design BOD Load |
|------------|-------------------------------------|---|--------------|----------------|-----------------|------------------|-----------------|
| Catlin | Village of Catlin | contact stabilization extended air | 400,000 GD | 200,000 GD | 1,000,000 GD | 400 lbs. | 800 lbs. |
| Georgetown | GT Water Pollution Control Center | primary, secondary, and tertiary | 1,500,000 GD | 400,000 GD | 200,000 GD | 125 lbs. | 125 - 150 lbs. |
| Hoopeston | City of Hoopeston | activated sludge, tertiary filters | 1,300,000 GD | 900,000 GD | 400,000 GD | 1,060 lbs. | 1,303 lbs. |
| Westville | Westville/Belgium Sanitary District | trickling filter activated sludge | 775,000 GD | 600,000 GD | 1,000,000 GD | 54 - 100 lbs. | 175 - 350 lbs. |
| Oakwood | Village of Oakwood | primary, secondary, and tertiary | 220,000 GD | 170,000 GD | | 390 lbs. | 775 lbs. |
| Potomac | Village of Potomac | dual lagoons, rock filter, chlorine contact | 1,060,000 GD | 70,000 GD | 990,000 GD | 20 mg/liter | 25 mg/liter |
| Ridge Farm | Village of Ridge Farm | trickle filtration | 302,400 GD | 55,000 GD | *1,659,000 GD | 4.5 mg/liter | 20.0 mg/liter |
| Rossville | Village of Rossville | 2-cell lagoons, sand filter, operating w/chlorine exemption | 450,000 GD | 180,000 GD | 270,000 GD | 7.0 mg/liter | 10 mg/liter |
| Tilton | ERH Enterprises | primary and secondary treatment | 460,000 GD | 228,000 GD | 188,000 GD | 37.5 lbs/D | 200.2 lbs/D |

*Ridge Farm Sanitation Note: Excess capacity includes 1,411,000 GD storm & surface water in addition to treated sanitary. The 1,411,000 is chlorinated before release.

Local Tax Rates: Danville Township

| Taxing unit | 2003 payable in 2004 | 2004 payable in 2005 | 2005 payable in 2006 | 2006 payable in 2007 | 2007 payable in 2008 | 2008 payable in 2009 |
|--------------|----------------------|----------------------|----------------------|----------------------|----------------------|----------------------|
| Township | 0.3706% | 0.38890% | 0.39140% | 0.3872% | 0.3825% | 0.3793% |
| City | 1.8404% | 1.93790% | 1.91060% | 1.7854% | 1.7875% | 1.8846% |
| County | 1.0452% | 1.22180% | 1.46300% | 1.4503% | 1.3683% | 1.3313% |
| School | 4.3932% | 4.44280% | 4.46070% | 4.9624% | 4.8945% | 4.8902% |
| Other | 2.9574% | 1.2445% | 1.2579% | 1.2273% | 1.2069% | 1.2163% |
| Total | 10.6068% | 9.2359% | 9.4836% | 9.8126% | 9.6397% | 9.7017% |
| Equalizer | 1.000% | 1.0345% | 1.000% | 1.0448% | 1.000% | 1.0338% |

Major Illinois Taxes

| | | |
|--|--|---|
| Property Tax | State Average: 10.51% Vermilion County Average: 8.65% *2008 payable in 2009 equalization factor | *32.24 % of real property 0.0% equipment 0.0% machinery 0.0% inventory |
| Sales Tax | State: 6.25% Vermilion County: 0.25% Danville: 1.25% | Retail purchases of tangible personal property |
| Gasoline | 20.1 cents | Per gallon sold |
| Corporate Income | 7.3% | Income apportioned to IL |
| Individual Income | 3.0% | Income reported on federal return |
| Unemployment Compensation 2009 New Employers | Range: 0.6– 6.8% | First \$12,300 paid each employee |
| If payroll less than \$50,000 gross per quarter | 3.1% maximum 5.4% | |
| Worker's Compensation Premium * State Average Manufacturing | 2.69% overall rate | Payroll |

Source: Illinois Department of Commerce and Economic Opportunity

Grants, Loans & Incentives - Illinois Programs

Grants and Loans: Illinois offers a large number of grants for eligible recipients. These grants can be used for several programs, including research, conservation, business and many others. Illinois Department of Commerce and Economic Opportunity (DCEO) can provide eligible applicants with loan assistance.

Illinois EDGE Program: The Illinois EDGE (Economic Development for a Growing Economy) program is administered by the Illinois Department of Commerce and Economic Opportunity (DCEO). As a tax credit, the EDGE program allows a firm to reduce the costs of doing business in Illinois when compared with similar costs in other states where it could have located its operation. The credits would be available to the firm for up to a total of 10 years for each project.

Start-Up Incentives: Illinois provides entrepreneurs with a wealth of incentives to open their businesses here, including the Illinois Enterprise Zone Program tax incentive, which covers sites in Danville and Tilton, Illinois.

Small Business Assistance: Small Business Development Centers located throughout the state provide assistance to new and existing small businesses, including one-on-one business counseling and management assistance, assistance with the development of business plans, help accessing marketing information and the development of business plans, business financing programs, assistance with financial analysis and planning as well as access to business education and training opportunities.

Women and Minority Business Assistance: In Illinois, additional programs and loans are offered to entrepreneurs who wish to register as a minority or women-owned business and meet the following criteria:

- A minority or women-owned business is one that is 51% or more owned, operated and controlled, on a daily basis by a minority or female.
- Minority categories included: African-American, Hispanic, Asian, or Native American.

Other criteria such as corporation board composition, origin of start-up funds and knowledge of the business operations are also factors.

Tax Incentives: Illinois offers several tax incentives to businesses, including the Illinois Enterprise Zone Program, the High Impact Business Program, and Illinois EDGE (Economic Development for a Growing Economy).

Other Incentives: Illinois offers a number of innovative programs to augment conventional sources of financing and help with business locations, relocations, and expansions, including The Technology Venture Investment Program (TVIP), the Large Business Development Program, and others.

Business Incentives: DCEO's Bureau of Business Development administers a wide array of programs and services designed to help Illinois businesses thrive in today's economy. We offer expansion incentives, technology support services, access to capital, global marketing expertise, or job training and education for workers.

Primary Source: State of Illinois Business Portal, <http://business.illinois.gov/assistance.cfm>

Local Economic Development Incentives

[Enterprise Zone Program](#)

An Enterprise Zone is a specially designated area in which tax incentives and direct financial assistance are provided. The Enterprise Zone provides property tax abatements as well as other tax credits and tax exemptions to businesses located within the Enterprise Zone. For more information on the Enterprise Zone Program click on the heading above. To check and see whether a property is located within the Danville-Tilton-Vermilion County Enterprise Zone click [here](#).

[Tax Increment Financing](#)

Tax Increment Financing (TIF) is a financing tool available to local governments to spur economic development and revitalization of blighted areas. The City of Danville has two new recently adopted TIF Districts. ([more](#))

Special Service Areas

Special Services Areas are formed to finance the provision of additional or enhanced services, improvements, or a facility in a specific area in the community. Danville currently has two special service areas. SSA1 covers the Downtown area, with revenues going toward Downtown Danville Inc. for downtown revitalization activities. SSA2 covers the Eastgate Industrial Park area and was put in place to fund infrastructure improvements related to the development of the Eastgate Industrial Park.

Small Business Revolving Loan Fund

The Small Business Revolving Loan Fund is designed to provide low interest loans to small business owners to help them establish a business and/or assist established small businesses in growing their business.

Facade Loan Program

The Facade Loan Program is designed to encourage owners of historical buildings in the downtown area to restore the facade of their buildings to their original luster.

Source: [City of Danville Public Development Department](#)

City of Danville Public Development Department, Community Development Division

The Community Development Division of the City of Danville Public Development Department is responsible for a variety of programs and initiatives designed to advance the overall health and viability of the City's residential neighborhoods. Federal and State grant programs aimed at these objectives are utilized by Community Development.

| | |
|-----------------------------------|--|
| Community Development Block Grant | <p>This federal funding source provides the following activities supervised by the Community Development Division:</p> <ul style="list-style-type: none">• Owner-occupied housing rehabilitation for low-moderate income families in targeted areas• Accessibility modifications in homes of low-moderate persons with mobility and/or sensory disabilities• Rehabilitation assistance for non-profits providing housing for the homeless and special needs populations• Economic Development grants and loans which create or retain jobs for low income workers• Replacement of sanitary sewer systems• Replacement of public infrastructure in support of affordable housing |
| HOME Program | <p>Another federal source for grants and loans to further safe, decent and affordable housing, made available through the Illinois Housing Development Authority. Community Development often applies for these funds in the fall of the year with programs ready to launch in spring.</p> <ul style="list-style-type: none">• The Small Rental Properties Program (SRPP) can provide up to \$15,000 per unit to rehabilitate affordable rental housing• Homebuyer's Assistance, (presently not funded in Danville), assists moderate-income families in purchasing their own home |
| Historic Preservation | <p>Danville has its own Historic Preservation Ordinance and is recognized as a Certified Local Government by the Illinois Historic Preservation Agency. This status, conferred to local governments through states and recognized by the National Trust for Historic Preservation makes preservation information and resources available to us. The Community Development Manager, Mr. John Dreher, acts as Danville's historic preservation planner. A seven member Commission made up of local volunteers appointed by the Mayor meet on the second Thursday of each month at 5:00 p.m. at the Municipal Building to address preservation concerns.</p> |
| New Day Initiative | <p>This newest of revitalization programs maintained by the City provides support and incentives for the construction of new housing on vacant properties in Danville's traditional neighborhoods. Fee waivers, forgiveness of past fines and liens and help with lot clearance and infrastructure improvements are all part of the negotiable package the City of Danville is willing to provide to the new home builder.</p> |
| Neighborhood Association Building | <p>Community Development staff assist any interested citizens in forming neighborhood associations. Specific "best practices" advice is available, along with staff assistance for start-up. Information on the benefits of forming an association and recommendations for success are available. A list of contacts and area maps for existing associations is available here.</p> |
| Lead Poisoning Prevention | <p>There are two Lead Risk Assessors, licensed by the Illinois Department of Public Health, currently on the Community Development staff who provide training and advice for citizens in reducing risks presented by the disturbance of lead-based paint. Educational materials, how-to advice and testing to determine if dangerous concentrations of lead are present are available to Danville residents.</p> |

Source: Community Development <http://www.cityofdanville.org/index.php?cID=103>

Costs & Availability of Sites and Buildings

A complete, searchable listing of our available sites and buildings is managed through [Location One](#). Follow the link on our web site to explore our listings.

Operating Conditions

Unemployment Rates for Vermilion County and City of Danville (previous 6 months)

| | Rate for Vermilion County | Rate for City of Danville |
|---------------|------------------------------|------------------------------|
| June 2010 | 12.3% | 14.4% |
| May 2010 | 12.9% | 11.1% |
| April 2010 | 12.7% | 14.4% |
| March 2010 | 14.6% | 13.6% |
| February 2010 | 15.1% | 16.1% |
| January 2010 | 15.1% | 16.3% |

Workforce Information Update & Charts

A PDF is available from our web site with charts and data from the Illinois Department of Employment Security Economic Information and Analysis Division depict the composition of the local economy and the dramatic strengthening of the job base that has occurred over the last couple of years.

Projected Distribution & Logistics Growth

Local projections compared to State of Illinois and national projections - Distribution & Logistics Cluster

| Position | Vermilion County Projections from Jan. 2009 to Jan. 2011 | State of Illinois | | U.S. Bureau of Labor Statistics Projections to 2014 |
|---|--|-----------------------|------------------------------|---|
| | | Projections 2004-2014 | Estimated Annual % of Growth | |
| Warehouse – Selectors/ Loaders/ Stocker/Handler | 61 | 13,759 | 9.74 | Expected to decline |
| Operator – Industrial (Forklift) | 41 | 2,984 | 7.1 | Grow faster than the average |
| Driver – Tractor | 25 | 11,776 | 14.94 | Fast growth rate |
| General Labor | 20 | 2,116 | 6.92 | Grow more slowly than average |

Average Commuting Patterns for Workforce

| | |
|------------------|--------------|
| United States | 25.5 minutes |
| Midwest | 24.0 minutes |
| Indiana | 22.6 minutes |
| Illinois | 28.0 minutes |
| Vermilion County | 20.4 minutes |

Source: 2000 Census

Current Experienced Labor Force in Vermilion County

| | |
|--|---------------|
| Management, Business & Financial Workers | 2,811 |
| Science, Engineering & Computer Professionals | 606 |
| Healthcare Practitioner Professionals | 1,077 |
| Other Professional Workers | 3,279 |
| Technicians | 836 |
| Sales Workers | 3,414 |
| Administrative Support Workers | 6,497 |
| Construction and Extractive Craft Workers | 1,908 |
| Installation, Maintenance and Repair Craft Workers | 2,284 |
| Production Operative Workers | 4,602 |
| Transportation and Material Moving Operative Workers | 2,628 |
| Laborers and Helpers | 2,133 |
| Protective Service Workers | 827 |
| Service Workers, except Protective | 5,412 |
| Other Occupations | 354 |
| Total | 38,668 |

Source: 2000 Special EEO Tabulation File, US Census Bureau

Prepared by Economic Information and Analysis Division, Illinois Department of Employment Security

Full *Workforce Availability Information 2005 Vermilion County, One Source Workforce & Career Information*, Illinois Department of Employment Security document available as PDF download <http://lmi.ides.state.il.us/affaction/Vermilion.pdf>.

Labor Management Relations - Vermilion County, Illinois Union Election Data/Trends

In brief, 12 elections, including 7 lost involving 337 employees and 5 won involving 114 employees.

| Year | Union/Company | Vote for | Voted against | Vote challenged | # of employees | Petitioner status |
|---------------|---|------------|---------------|-----------------|----------------|-----------------------------------|
| 2008 | No petitions for unionization were filed | | | | | |
| 2007 | No petitions for unionization were filed | 0 | 0 | 0 | 0 | |
| 2006 | Int'l Union, UAW Local 579, Time-O-Matic | 21 | 12 | 1 | 33 | Won |
| | Service Employees Int'l Union Local 880, Help at Home, Inc. | 32 | 7 | 2 | 47 | Won |
| | Teamsters Local 26, First Student, Inc. | 45 | 30 | 1 | 79 | Won |
| | Teamsters Local 26, Earl Gaudio & Son, Inc. | 3 | 8 | 0 | 12 | Lost |
| 2005 | No petitions for unionization were filed | 0 | 0 | 0 | 0 | |
| 2004 | Teamsters Local 26, Silgan Container Corp. | 21 | 86 | 0 | 110 | Lost |
| 2003 | Teamsters Local 26, Hawkeye Foodservice Distribution | 5 | 12 | 0 | 19 | Lost |
| 2002 | Int'l Assoc. Machinists/ThyssenKrupp Gerlach Co. | 28 | 60 | 0 | 91 | Lost |
| | IBEW Local 538/Digital Communications | 4 | 5 | 0 | 10 | Lost |
| | IBEW Local 538/Life Safety Design | 5 | 1 | 0 | 6 | Won |
| | Teamsters Local 26/Pepsi-Cola | 10 | 13 | 0 | 24 | Lost |
| | Teamsters Local 26/Jackson Plastics | 31 | 18 | 0 | 54 | Won <i>Business Now Closed</i> |
| 2001 | Teamsters/Meat Plus, Inc. | 1 | 5 | 2 | 8 | Lost |
| | Teamsters/CRIS Senior Services | 9 | 0 | 0 | 11 | Won <i>Decert in Jan 2004</i> |
| | Teamsters/Pepsi Bottlers | 14 | 19 | 0 | 25 | Won |
| | Teamsters/Allied Waste | 11 | 5 | 1 | 18 | Won |
| | Teamsters/Jackson Plastics | 22 | 53 | 0 | 75 | Lost |
| 2000 | No petitions for unionization were filed | 0 | 0 | 0 | 0 | |
| TOTALS | | 161 | 277 | 3 | 451 | |

Source: National Labor Relations Board, Peoria, IL. Additional years of historical data available upon request.

Work Stoppage Data

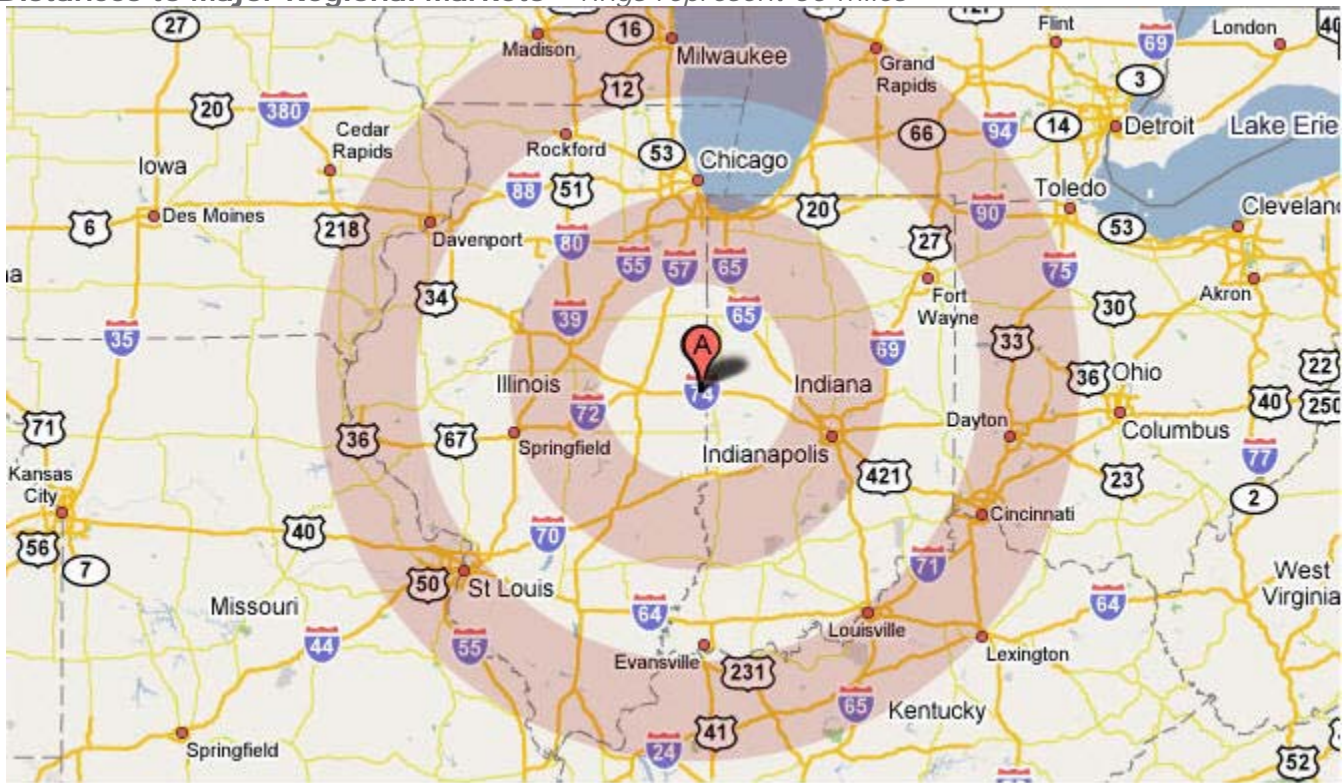
| Year | Company | Union | Employees Idled | Start Date | End Date | Total Days |
|------|---------------------|----------------|-----------------|------------|----------|------------|
| 2008 | No stoppages | | | | | |
| 2007 | No stoppages | | | | | |
| 2006 | No stoppages | | | | | |
| 2005 | ThyssenKrupp Forge | UAW Local 2128 | 160 | 5/11/05 | 6/25/05 | 45 |
| 2004 | Vermilion County | IBEW | 62 | 7/30/04 | 8/21/04 | 22 |
| 2003 | No stoppages | | | | | |
| 2002 | No stoppages | | | | | |
| 2001 | Bunge Lauhoff Grain | PACE | 194 | 5/17/01 | 8/4/01 | 89 |
| 2000 | ThyssenKrupp Forge | UAW | 168 | 5/11/00 | 5/26/00 | 15 |

Source: Illinois Dept. of Commerce & Economic Opportunity

Distances to Major Regional Markets

| | |
|------------------|-----------|
| Chicago, IL | 125 miles |
| Cincinnati, OH | 260 miles |
| Columbus, OH | 258 miles |
| Des Moines, IA | 382 miles |
| Detroit, MI | 379 miles |
| Indianapolis, IN | 88 miles |
| Kansas City, KS | 437 miles |
| Louisville, KY | 202 miles |
| Milwaukee, WI | 222 miles |
| Minneapolis, MN | 533 miles |
| St. Louis, MO | 198 miles |
| TriCities IL/IA | 215 miles |

Distances to Major Regional Markets – rings represent 50 miles



Base map provided by [Google](https://www.google.com).

Highway Access

| State Routes | US Routes | Interstates |
|--------------|-----------|-------------|
| 1 | 150 | 74 |
| | 136 | 57 |
| | 41 | 72 |
| | 63 | |
| | 45 | |

Danville Area Motor Carriers (Truck Services)

According to the Vermilion Advantage 2006 Transportation Survey completed by local businesses, over 90 motor freight carriers service the area, 13 of them from local terminals.

| Company | Type(s) of Trailer Equipment Available |
|---|---|
| ABF Freight | 28' Pups & 48', vans |
| Adrian Carriers | Flatbeds, 48' vans |
| All Modes | 53' Heated & insulated vans |
| Allison Trucking Inc. | Tanker, dump, trailer, vans |
| Associated Transfer | 53' trailers, some insulated |
| Brandt Truck Line, Inc. | Trailer van 53' |
| Buesing Bulk Transportation | Bulk, Pneumatic |
| C.H. Robinson | Vans, reefers |
| C.K.R. | Vans, reefers |
| Cargo Master, Inc. | Reefers, Vans |
| CC Midwest | Vans |
| Central Freight Lines | Vans & pups |
| Central Illinois Transportation, Inc. | 48' Vans |
| Central States Distribution | Dry Vans, 48', & 53' |
| CFI | 53' Vans |
| CHTL | Vans, 53' Trailers |
| Colonial Freight Systems | Vans, reefers, 48', 53' |
| Commercial Transport, Inc. | Brokerage |
| Conway Central Express | 28', 52' pups |
| Cox Transfer | Vans, trailers, flatbeds |
| Crete Carriers | Over 100 flatbeds, vans |
| Critical Transportation | 48' vans & straight trucks |
| Experts CTX (part of Central Transport) | |
| Curry Ice & Coal | Buckets |
| Dallas & Mavis | All kinds |
| Dart Transit | 53' Van trailers |
| Dayton Freight | Vans |
| Dohrn Transfer | Van, reefers, flatbeds 53' |
| Dotseth Trucking | 48', 53' drive vans |
| Double D Freight | Van trailers |
| Enterprise | Reefers & vans |
| Estes Express | 28', 48', 53' |
| FDS | 48' & 53' |
| FedEx Freight | Straight, van, pups |
| FFE | 48'-53' |
| Fleet Global | Dry vans 53' |
| Freight All Kinds | Reefers, Vans 48'&53' |
| Fuch's | All but reefers |
| G & D Transportation | Flatbed, dry vans, straight trucks & containers |
| Gainey Transportation | 53' Dry vans |
| Garland Gehrke Trucking | 48' & 53' Dry Vans |
| GOTOH Distribution Service, Inc. | Vans, trucks, tractor-trailers |
| Gra-Belle | Vans |
| Gray Transportation | Reefers & vans |
| Henderson Trucking | Refrigerated trailers |
| Herzog Trucking, Inc. | Vans, flatbeds, curtainside trailers |
| Hub City | All – No Tanks |
| KAT | 48'-53' Reefers |

(continued on next page)

| | |
|--|---|
| Kinetsu World Exp. (KWE) | Intern. Air & Ocean Holding |
| Landstar/ BESL | Flatbed, dry vans, reefers |
| Lyons Trucking | Hopper Bottoms/Dumps |
| M & S Transport/R C Trucking | Vans - No flatbeds |
| Mayfield | Refrigerated |
| McCabe Trucking | Reefers – Dry Vans |
| Mercer Transportation | Flatbeds, vans |
| Mid-States Express, Inc. | Dry Vans 53' and 48' |
| Milan Express | Vans, flatbeds |
| Miller Transfer | Flatbeds, axles |
| Mitsubishi Logistics America Corporation | 20', 40' Reefers Hire out |
| Morgan Express | Reefers, and Vans |
| N & M Transfer | 48' and 53' vans |
| NBS Trucking Limited | 53' vans, |
| Nippon Express | 53' flatbeds, dry vans, All types |
| Nussbaum Trucking, Inc. | 53' vans |
| Old Dominion Freight Lines | 28' Pups |
| Overnite Tran. Co. | Trailers, Dry Vans, 28' Pups |
| R & L Carriers | 28' Pups, tractor trailers, vans |
| RC Transport | Closed Vans, |
| Ravens Trucking | 53' vans-reefers |
| Ribbe Trucking | Dump truck |
| Risinger Brothers Trucking | 53' air wide |
| Roadway Express, Inc. | 28', 48' |
| Rudolf Express | Vans |
| Scherer Bulk Supply | Dry ball tankers |
| Sisbro | Reefers, dry vans |
| Sheldon Transportation | 48' & 53' Dry Vans, Trailers |
| Standard Forwarding | 53' Dry Vans |
| Swift | 53' Dry Vans |
| Transcorr | Dry vans 53' |
| Universal AM-CAN | Vans, reefers, flatbeds, & step decks |
| USF Distributions | 48', 53' Drive vans |
| USF Holland | Drive vans |
| Vitran Transportation Sys. | 28' Pups |
| Watkins Motor Lines | Pups 28', 53' |
| Werner | Flatbeds, 53' Dry vans |
| West Florida Transport | Reefers |
| Whiteline Express | 53' Dry Vans |
| Wilcare Co. | 53', 48' vans |
| Yellow Freight | Flatbeds, 48', 45' dry vans, Refrigeration |
| YTL Truck Lines | 53' dry vans |

Regional Airports: Vermilion County Airport

Commercial Airport: Vermilion County Airport, Danville, Illinois (DNV)
www.airnav.com/airport/DNV

Type of runway: Asphalt

Length of longest runway: 6,000 feet

Instrument landing system: Wilcox Mark I-D with glide slope indicators; RNAV approach; VOR approach

Lighting system: Mike-a-lite/pilot radio activated

Hangars: Yes

Freight service: United Parcel Service; Aero Charter Express

Regional Airports: University of Illinois/Willard

Commercial Airport: University of Illinois/Willard Airport, Champaign, Illinois (CMI)
www.flycmi.com

Type of runway: Concrete and asphalt

Lengths of runways: 8,300 ft., 6,500 ft., 5,300 ft.

Control tower: 6:00 am through 11:00 pm

Lighting system: Tower controlled, pilot controlled

Hangars: Yes

Service: 5 a.m.-10 p.m. aircraft maintenance & fuel service

Driving distance/time from Danville, Illinois: Approximately 45 miles / Approximately 45 minutes

Passenger service: American Eagle: 3 departures and 3 arrivals per day (service to O'Hare International Airport) 1 departure and arrival per day (service Dallas/Fort Worth International Airport)
Northwest Airlink: 2 departures and 2 arrivals per day (service to Detroit, MI)

Regional Airports: Bloomington

Commercial Airport: Central Illinois Regional Airport, Bloomington, Illinois (BMI)
www.cira.com

Type of runway: Concrete and asphalt

Lengths of runways: 8,000 ft., 6,525 ft.

Control tower: 6:00 am through 10:00 pm

Lighting system: Tower controlled, pilot controlled

Hangars: Yes

Service: 24 hour aircraft maintenance & fuel service

Driving distance/time from Danville, Illinois: Approximately 80 miles / Approximately 90 minutes

Passenger service: Airtran: 1 departure and arrival 4 times a week-Tues.-Thur., Sat. & Sun. (service to Orlando International Airport); 3 departures and arrivals per day (service to Atlanta International Airport)
Northwest Airlink: 3 departures and arrivals per day (service to Detroit, MI)
American Eagle: 3 arrivals and departures per day (service to O'Hare International Airport)
United Express: 4 arrivals and departures per day (service to and from O'Hare International Airport)
DELTA Connection: 3 times a day plus Atlanta

Regional Airports: Indianapolis International

International Airport: Indianapolis International Airport, Indianapolis, Illinois (IND)

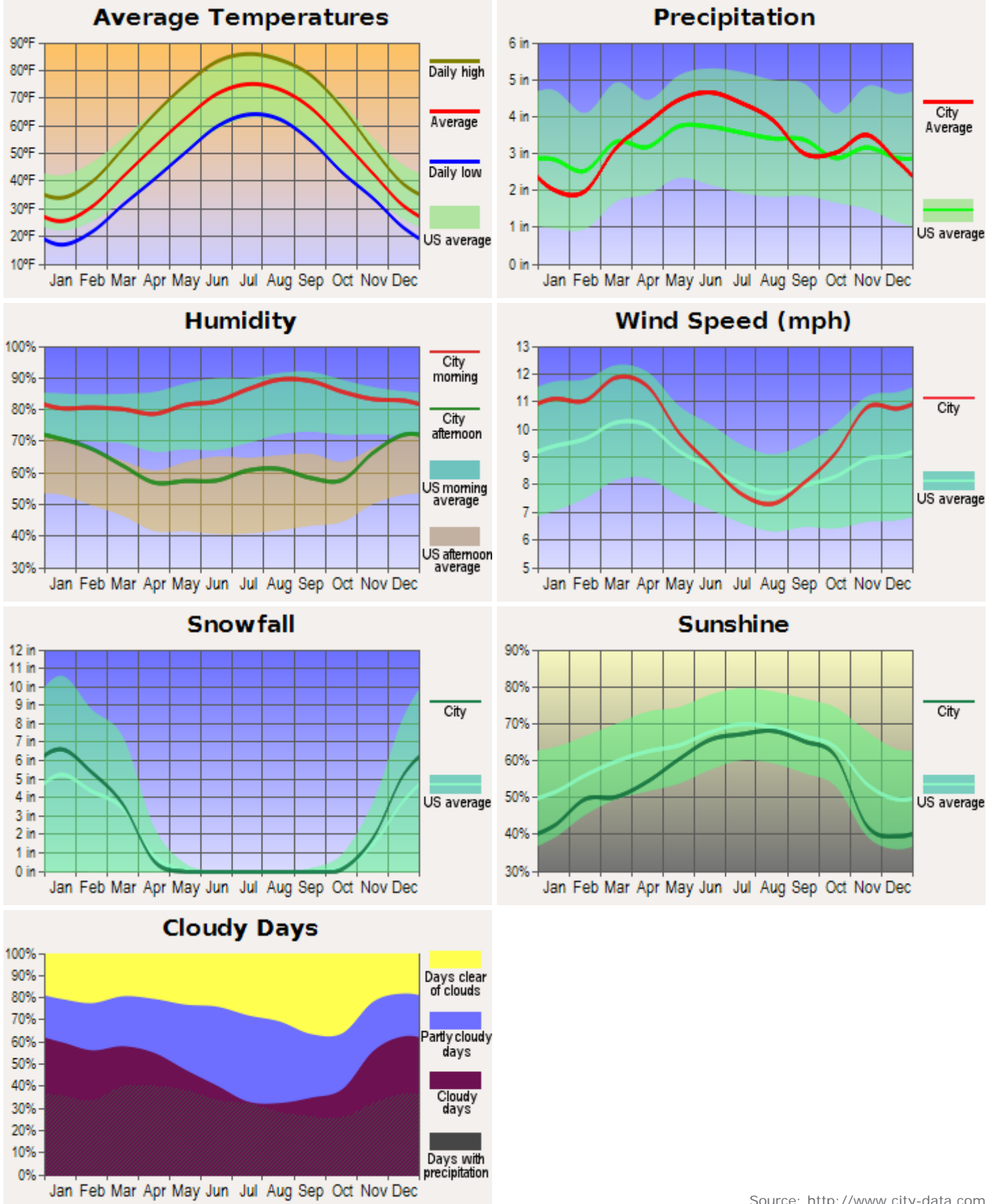
www.indianapolisairport.com

Driving distance/time from Danville, Illinois: Approximately 88 miles / Approximately 90 minutes

| | | |
|--------------------|----------------------|---------------------|
| Passenger service: | Air Canada | 2 departures daily |
| | Airtran Airways | 10 departures daily |
| | American Airlines | 19 departures daily |
| | Continental Airlines | 14 departures daily |
| | Delta Airlines | 13 departures daily |
| | Frontier | 3 departures daily |
| | Midwest Connect | 3 departures daily |
| | Northwest | 36 departures daily |
| | Southwest Airlines | 21 departures daily |
| | United Airlines | 15 departures daily |
| | US Airways | 26 departures daily |

Quality of Life

Climate and Weather



Source: <http://www.city-data.com>

Crime Statistics

Crime Index Offenses/Crime Rate Comparison 2006/2007

| | 2006 | | 2007 | |
|----------------------------|------------------|-------------------|------------------|-------------------|
| | Vermilion County | State of Illinois | Vermilion County | State of Illinois |
| Total Crime Index Offenses | 4,320 | 470,730 | 4,136 | 456,085 |
| <i>per 100,000</i> | 5,246.3 | 3,688.1 | 5,047.5 | 3,554.3 |
| Murder | 2 | 786 | 6 | 752 |
| <i>per 100,000</i> | 2.4 | 6.2 | 7.3 | 5.9 |
| Criminal Sexual Assault | 67 | 5,729 | 89 | 5,596 |
| <i>per 100,000</i> | 81.4 | 44.9 | 108.6 | 43.6 |
| Robbery | 121 | 23,941 | 143 | 23,135 |
| <i>per 100,000</i> | 146.9 | 187.6 | 174.5 | 180.3 |
| Aggravated Assault/Battery | 395 | 41,222 | 378 | 40,719 |
| <i>per 100,000</i> | 479.7 | 323.0 | 461.3 | 317.3 |
| Burglary | 1,174 | 77,749 | 977 | 75,524 |
| <i>per 100,000</i> | 1,425.7 | 609.2 | 1,192.3 | 588.6 |
| Theft | 2,373 | 281,018 | 2,330 | 273,740 |
| <i>per 100,000</i> | 2,881.8 | 2,201.8 | 2,843.5 | 2,133.3 |
| Motor Vehicle Theft | 157 | 37,900 | 184 | 34,281 |
| <i>per 100,000</i> | 190.7 | 296.9 | 224.6 | 267.2 |
| Arson | 31 | 2,385 | 29 | 2,338 |
| <i>per 100,000</i> | 37.6 | 18.7 | 35.4 | 18.2 |

Source: http://www.isp.state.il.us/docs/cii/cii07/cii07_Section_II_Pg27_to_200.pdf

Crime Index Offenses/Arrest Rate Comparison 2006/2007

| | 2006 | | 2007 | |
|----------------------------|------------------|-------------------|------------------|-------------------|
| | Vermilion County | State of Illinois | Vermilion County | State of Illinois |
| Total Crime Index Arrests | 772 | 95,404 | 674 | 95,773 |
| <i>per 100,000</i> | 937.5 | 747.5 | 822.5 | 746.4 |
| Murder | 1 | 533 | 1 | 609 |
| <i>per 100,000</i> | 1.2 | 4.2 | 1.2 | 4.7 |
| Criminal Sexual Assault | 10 | 1,497 | 21 | 1,519 |
| <i>per 100,000</i> | 12.1 | 11.7 | 25.6 | 11.8 |
| Robbery | 58 | 5,185 | 56 | 4,876 |
| <i>per 100,000</i> | 70.4 | 40.6 | 68.3 | 38.0 |
| Aggravated Assault/Battery | 253 | 18,342 | 228 | 17,458 |
| <i>per 100,000</i> | 307.2 | 143.7 | 278.2 | 136.1 |
| Burglary | 240 | 10,777 | 162 | 10,403 |
| <i>per 100,000</i> | 291.5 | 84.4 | 197.7 | 81.1 |
| Theft | 172 | 51,195 | 166 | 53,895 |
| <i>per 100,000</i> | 208.9 | 401.1 | 202.6 | 420.0 |
| Motor Vehicle Theft | 31 | 7,423 | 36 | 6,566 |
| <i>per 100,000</i> | 37.6 | 58.2 | 43.9 | 51.2 |
| Arson | 7 | 452 | 4 | 447 |
| <i>per 100,000</i> | 8.5 | 3.5 | 4.9 | 3.5 |

Source: http://www.isp.state.il.us/docs/cii/cii07/cii07_Section_II_Pg27_to_200.pdf

Drug Crime Arrest Comparison 2006/2007

| | 2006 | | 2007 | |
|-------------------------------------|------------------|-------------------|------------------|-------------------|
| | Vermilion County | State of Illinois | Vermilion County | State of Illinois |
| <i>Rate per 100,000</i> | 477.3 | 883.0 | 548.0 | 857.6 |
| Total Drug Arrests | 393 | 112,701 | 449 | 110,042 |
| Cannabis Control Act | 170 | 51,846 | 185 | 54,753 |
| Controlled Substances Act | 176 | 44,728 | 186 | 39,054 |
| Hypodermic Syringes/ Needles Act | 2 | 643 | 0 | 595 |
| Drug Paraphernalia Act | 45 | 15,484 | 78 | 15,639 |

Source: http://www.isp.state.il.us/docs/cii/cii07/cii07_Section_II_Pg27_to_200.pdf