

Manufacturing

19.3% of the Vermilion County economy is comprised of manufacturing ranging from automotive components, food production, Biofuels, plastic components, electronics, fabricated structural products/equipment and much more. Manufacturing makes up more than 9,320,477SF of occupied facilities in Vermilion County and employs approximately 6300. For a copy of our complete Industrial Directory listing, contact Linda Bolton at lbolton@vermilionadvantage.com.

Member Spotlight: ThyssenKrupp Presta Danville, LLC



Carlos Dias, Operations Manager
ThyssenKrupp Presta Danville, LLC
www.thyssenkrupppresta.com

"ThyssenKrupp Presta Danville, LLC has been honored to be an economic partner with Danville since 1995. Since then, ThyssenKrupp Presta, LLC has become the largest supplier of assembled camshafts in the United States. With customers, both domestic and international, we are proud to have a company culture that is diverse in its knowledge and employees.

ThyssenKrupp Presta is known not only for its excellence as a tier one automotive supplier, but for its many investments in new products and processes.

Excellence is a standard that we strive to maintain at every level.

Our course to continually improve is evident to our suppliers, customers, employees and our community."

Member Spotlight: Danville Metal Stamping, Inc.



**Judd Peck, President and CEO
Danville Metal Stamping, Inc.**
www.danvillemetal.com

"For more than 60 years, Danville, together with the surrounding area, has afforded Danville Metal tremendous support as we grew from three guys in a garage to over 425 employees occupying two facilities. Today, the Danville area helps us remain competitive in the global aerospace and gas turbine markets by providing an engaged and productive work force that is second to none and truly is our competitive advantage."

Member Spotlight: ThyssenKrupp Crankshaft Company



**Norman D. Young, President/CEO
ThyssenKrupp Crankshaft Company**
www.thyssen-kruppcrankshaft.com

"ThyssenKrupp Crankshaft Company, a leading producer of high-quality Forged and Machined crankshafts for the North American automotive, heavy-duty truck and equipment markets, has called Danville its home for almost 20 years. Our close ties to Danville are a great source of pride to the nearly 400 members of our team, and we're equally proud that our products carry the 'made in Illinois' tag."

Following are the location factors that support these existing businesses and encourage many new locations and expansions each year.

Operating Costs

Labor Cost Comparison

Utilities - Danville

Electricity

Natural Gas

Water

Sanitation

Solid Waste

Telecommunications

Utilities - Vermilion County

Electricity

Water

Sanitation

Taxes

Local Taxes

Illinois Taxes

Grants, Loans & Incentives

Local Programs

Community Development

Cost/Availability of Sites and Buildings

Operating Conditions

Labor Statistics

Unemployment Rates

Workforce Information Update & Charts

Projected Growth

Average Commuting Patterns

Quality of Work Force

Current Experienced Labor Force in Vermilion County

Labor Management Relations

Work Stoppage Data

Transportation

Proximity to Major Markets

Mileage Chart

Map

Highway Access

Motor Carriers

Rail Carriers

Chart

Rail Lines Map

Regional Air Service

Area Map

Vermilion County

Champaign/Urbana

Bloomington

Indianapolis

Quality of Life

Parks, Recreation and Events

Colleges and Universities

Secondary school scores (ACT)

Cost of Living (ACCRA)

Climate and Weather

Healthcare Resources and Facilities

Operating Costs

Manufacturing Labor Cost Comparison

Job Title	Local Avg. Annual Wage*	National Avg. Annual Wage**
Assembler – Electronic/ Electrical Control	\$32,240	\$31,110
Assembler – Production	\$28,642	\$31,040
Electrician	\$45,968	\$51,810
General Laborer	\$31,616	\$33,590
Inspector	\$30,202	\$35,550
Machine – Operator	\$33,467	\$30,030
Machinist	\$39,000	\$39,780
Maintenance – Repairer	\$40,082	\$40,310
Mechanic – Industrial Machinery	\$36,941	\$47,100
Operator – Industrial (Forklift)	\$32,074	\$31,500
Sheet Metal Worker	\$39,686	\$45,710
Supervisor – First Line	\$40,082	\$56,170
Tool & Die Maker	\$42,515	\$48,710

*Local data from Vermilion Advantage 2011 Wage & Benefit Survey

**National data from 2010 U.S. Dept. of Labor, Bureau of Labor Statistics

Utilities for Danville, Illinois: Electricity

In an effort to promote competition among electric power suppliers, Illinois lawmakers approved the Electric Service Customer Choice and Rate Relief Law of 1997. Today, commercial and industrial customers have a number of retail electric suppliers to choose from.

Illinois customers have three options for meeting their electric supply need in 2007 and beyond:

BGS – Basic Generation Service

RTP – Real Time Pricing

RES – Retail Electric Supplier

For more detail, see: <http://www2.ameren.com/business/rates/ratesPost2006AMIP.aspx>

As your delivery services company, your Ameren Illinois utility is responsible for the infrastructure that delivers electric from the power plant to your door. Their commitment to quality, around-the-clock service remains the same regardless of your power supplier.

For a list of those suppliers registered, certified and approved by the Illinois Commerce Commission go to: <http://www.icc.illinois.gov/utility/>

Utilities for Danville, Illinois: Natural Gas

Rates for customers that do not wheel gas directly from the pipeline include:

SC51: Residential Gas Service Rate

SC63: Small Volume Firm Gas Service

SC64: Intermediate Volume Gas Service

SC65: Large Volume Firm Gas Service

SC66: Seasonal Gas Service

SC76: Transportation of Customer-owned Gas and Best Effort Back Up

SC90: Contract Service

For more information, visit <http://www2.ameren.com/business/rates/ratesGasFullSrvDeIAMUEIP.aspx>.

Utilities for Danville, Illinois: Water

Supplier:	Aqua Illinois, Inc., www.aquaininois.com
Plant capacity:	14.0 MGD
Average demand:	7.8 MGD
Peak demand:	10.28 MGD
Vermilion County service area:	Danville, Tilton, and unincorporated areas adjacent to Danville; wholesale water to Westville and Catlin
Storage capacity:	Finished storage at plant: 1.25 MG Finished storage at distribution system: 8.8 MG
Production facilities:	<ul style="list-style-type: none"> • 14 MGD, state-of-the-art, modern treatment facility, went into operation 1992, current average pumpage 8 MGD • Split treatment, clarification - lime softening facility – nitrate removal (ion exchange) pH control with lime and CO₂ allows for water stability and corrosion control • Three billion gallon reservoir as source of supply
Source:	Lake Vermilion (supplied by North Fork of North Vermilion River)
Capacity:	3 billion gallons

Rates

	Cubic feet per month	Rate per 100 cubic feet
For the first...	100	\$4.3908
For the next...	900	\$3.1850
For all over 1,000	10,000	\$2.275
Large general service user (>35,000)	by contract only	\$1.138

Water Quality - Untreated

	Raw water quality, 2006	Finished water quality, 2006
Turbidity:	2.0 – 217 NTU	0.08 NTU (avg.)
	Daily readings (low – high)	Overall annual averages
Hardness	142-337 mg/l as CaCO ₃	151 mg/l as CaCO ₃
Alkalinity:	85-275 mg/l	72 mg/l
pH:	7.56-8.68 pH units	9.43 pH units
Total solids:	N/A	209 mg/l

Water Quality - Treated

Average analysis of treated water	
Average pressure in system:	50 psi
Ranges of treated water:	
Turbidity:	0.06-0.11 NTU
Monthly averages (low – high):	
Alkalinity:	50-72 mg/l
Fluoride:	0.91-1.12 mg/l
Iron:	<0.01 mg/l
Hardness:	104-160 mg/l as CaCO ₃

Utilities for Danville, Illinois: Sanitation

Supplier: Danville Sanitary District
 Type of treatment process: Secondary activated sludge with 3rd stage filters and sludge is land applied
 Capacity: 16.000 MGD
 Current demand: 8.5 MGD
 Excess capacity: 7.5 MGD
 Present BOD load: 9,951 lbs/day
 Design BOD load: 33,360 lbs/day

Utilities for Danville, Illinois: Solid Waste

Suppliers:	Brickyard Disposal (Danville)	Illinois Landfills, Inc. (Hoopeston)
	EPA permitted	EPA permitted
Capacity:	9,355,539 cubic yards	11,724,587 cubic yards
Life expectancy:	22+ years	100+ years

Current tipping fees at Brickyard Landfill and Illinois Landfill are \$49.00 per ton with a 2-ton minimum. In addition, an Environmental fee of \$5.00 per load and a fluctuating Fuel Recovery fee that is currently at 3.72 % are added to the total charge.

Utilities for Danville, Illinois: Telecommunications

AT&T Inc.

The new AT&T (formerly SBC) delivers an unsurpassed portfolio of traditional and IP-based voice, broadband internet, data transport, wireless and video services. The service area includes Danville and the southern two-thirds of Vermilion County. Fiber optics deployment in all directions from the Danville central office extended to the central dispatch offices in Eastgate; north to Newell Road; south to Hegler; Oakwood in the west and Southgate in the southeast. Find more information on the web at www.att.com

Cellular One of East Central Illinois

Cellular One, the only locally operated cellular service provider, offers the latest in telecommunications technology, including nationwide cellular phone service and high speed wireless internet for the home or business. Service plans are designed to meet the needs of East Central Illinois residents. More information is available at www.cellular1.net

AT&T Mobility (formerly Cingular Wireless)

Cingular Wireless is the largest wireless company in the United States, with more than 54 million subscribers who use the nation's largest digital voice and data network. Cingular is dedicated to providing customers in Central Illinois with wireless technology designed to enrich their lives. Find more information on the web at www.att.com

Verizon

Serving Bismarck, Alvin, Henning, and Hoopeston, including the north, northwest portion of the county; Rossville and central to northeast county; Sidell and southwest corner of county.

Verizon Wireless

Verizon Wireless is the nation's leading provider of wireless communications, with the largest nationwide wireless voice and data network and 37.5 million customers. Verizon Wireless offers customers in Central Illinois the very latest in wireless communications technology with a high level of customer service, broad range of equipment and service plans to suit every need, all backed by the company's Worry Free GuaranteeSM. Find more information on the web at www.verizonwireless.com

Utilities for Vermilion County, Illinois: Electricity

	Supplier	System Capacity	Peak System Demand
Catlin	Ameren (CILCO)	12,500 KW	4,000 KW
Georgetown	AmerenIP	4,441,000 KW	4,055,000 KW
Hoopeston	Ameren (CIPS)	18,900 KW	15,048 KW
Westville	AmerenIP	4,441,000 KW	4,055,000 KW
Oakwood	Ameren (CILCO)	12,500 KW	3,000 KW
Potomac	Ameren (CIPS)	8,400 KW	3,957 KW
Ridge Farm	AmerenIP	4,441,000 KW	4,055,000 KW
Rossville	Ameren (CIPS)	10,800 KW	2,980 KVA
Tilton	AmerenIP	4,441,000 KW	4,055,000 KW

Utilities for Vermilion County, Illinois: Water

	Supplier	Pumping Capacity	Average Demand	Peak Demand	Storage Capacity
Catlin	Aqua Illinois, Inc.	14,000,000 GD	7,800,000 GD	10,280,000 GD	9,800,000 G
Georgetown	City of Georgetown	2,000,000 GD	356,000 GD	450,000 GD	600,000 G
Hoopeston	City of Hoopeston	2,880,000 GD	700,000 GD	900,000 GD	625,000 G
Westville	Aqua Illinois, Inc.	14,000,000 GD	7,800,000 GD	10,280,000 GD	9,800,000 G
Oakwood	Village of Oakwood	300,000 GD	140,000 GD	225,000 GD	205,000 G
Potomac	Village of Potomac	175,000 GD	70,000 GD	85,000 GD	60,000 G
Ridge Farm	Village of Ridge Farm	288,000 GD	100,000 GD	155,000 GD	60,000 G
Rossville	Village of Rossville	756,000 GD	125,000 GD	200,000 GD	150,000 G
Tilton	Aqua Illinois, Inc.*	14,000,000 GD	7,800,000 GD	10,280,000 GD	9,800,000 G

Utilities for Vermilion County, Illinois: Sanitation

	Supplier	Treatment Process	Capacity	Current Demand	Excess Capacity	Present BOD Load	Design BOD Load
Catlin	Village of Catlin	contact stabilization extended air	400,000 GD	200,000 GD	1,000,000 GD	400 lbs.	800 lbs.
Georgetown	GT Water Pollution Control Center	primary, secondary, and tertiary	1,500,000 GD	400,000 GD	200,000 GD	125 lbs.	125 - 150 lbs.
Hoopeston	City of Hoopeston	activated sludge, tertiary filters	1,300,000 GD	900,000 GD	400,000 GD	1,060 lbs.	1,303 lbs.
Westville	Westville/Belgium Sanitary District	trickling filter activated sludge	775,000 GD	600,000 GD	1,000,000 GD	54 - 100 lbs.	175 - 350 lbs.
Oakwood	Village of Oakwood	primary, secondary, and tertiary	220,000 GD	170,000 GD		390 lbs.	775 lbs.
Potomac	Village of Potomac	dual lagoons, rock filter, chlorine contact	1,060,000 GD	70,000 GD	990,000 GD	20 mg/liter	25 mg/liter
Ridge Farm	Village of Ridge Farm	trickle filtration	302,400 GD	55,000 GD	*1,659,000 GD	4.5 mg/liter	20.0 mg/liter
Rossville	Village of Rossville	2-cell lagoons, sand filter, operating w/chlorine exemption	450,000 GD	180,000 GD	270,000 GD	7.0 mg/liter	10 mg/liter
Tilton	ERH Enterprises	primary and secondary treatment	460,000 GD	228,000 GD	188,000 GD	37.5 lbs/D	200.2 lbs/D

*Ridge Farm Sanitation Note: Excess capacity includes 1,411,000 GD storm & surface water in addition to treated sanitary. The 1,411,000 is chlorinated before release.

Local Tax Rates: Danville Township

Taxing unit	2003 payable in 2004	2004 payable in 2005	2005 payable in 2006	2006 payable in 2007	2007 payable in 2008	2008 payable in 2009
Township	0.3706%	0.38890%	0.39140%	0.3872%	0.3825%	0.3793%
City	1.8404%	1.93790%	1.91060%	1.7854%	1.7875%	1.8846%
County	1.0452%	1.22180%	1.46300%	1.4503%	1.3683%	1.3313%
School	4.3932%	4.44280%	4.46070%	4.9624%	4.8945%	4.8902%
Other	2.9574%	1.2445%	1.2579%	1.2273%	1.2069%	1.2163%
Total	10.6068%	9.2359%	9.4836%	9.8126%	9.6397%	9.7017%
Equalizer	1.000%	1.0345%	1.000%	1.0448%	1.000%	1.0338%

Major Illinois Taxes

Property Tax	State Average: 10.51% Vermilion County Average: 8.65% *2008 payable in 2009 equalization factor	*32.24 % of real property 0.0% equipment 0.0% machinery 0.0% inventory
Sales Tax	State: 6.25% Vermilion County: 0.25% Danville: 1.25%	Retail purchases of tangible personal property
Gasoline	20.1 cents	Per gallon sold
Corporate Income	7.3%	Income apportioned to IL
Individual Income	3.0%	Income reported on federal return
Unemployment Compensation 2009 New Employers	Range: 0.6– 6.8%	First \$12,300 paid each employee
If payroll less than \$50,000 gross per quarter	3.1% maximum 5.4%	
Worker's Compensation Premium * State Average Manufacturing	2.69% overall rate	Payroll

Source: Illinois Department of Commerce and Economic Opportunity

Grants, Loans & Incentives - Illinois Programs

Grants and Loans: Illinois offers a large number of grants for eligible recipients. These grants can be used for several programs, including research, conservation, business and many others. Illinois Department of Commerce and Economic Opportunity (DCEO) can provide eligible applicants with loan assistance.

Illinois EDGE Program: The Illinois EDGE (Economic Development for a Growing Economy) program is administered by the Illinois Department of Commerce and Economic Opportunity (DCEO). As a tax credit, the EDGE program allows a firm to reduce the costs of doing business in Illinois when compared with similar costs in other states where it could have located its operation. The credits would be available to the firm for up to a total of 10 years for each project.

Start-Up Incentives: Illinois provides entrepreneurs with a wealth of incentives to open their businesses here, including the Illinois Enterprise Zone Program tax incentive, which covers sites in Danville and Tilton, Illinois.

Small Business Assistance: Small Business Development Centers located throughout the state provide assistance to new and existing small businesses, including one-on-one business counseling and management assistance, assistance with the development of business plans, help accessing marketing information and the development of business plans, business financing programs, assistance with financial analysis and planning as well as access to business education and training opportunities.

Women and Minority Business Assistance: In Illinois, additional programs and loans are offered to entrepreneurs who wish to register as a minority or women-owned business and meet the following criteria:

- A minority or women-owned business is one that is 51% or more owned, operated and controlled, on a daily basis by a minority or female.
- Minority categories included: African-American, Hispanic, Asian, or Native American.

Other criteria such as corporation board composition, origin of start-up funds and knowledge of the business operations are also factors.

Tax Incentives: Illinois offers several tax incentives to businesses, including the Illinois Enterprise Zone Program, the High Impact Business Program, and Illinois EDGE (Economic Development for a Growing Economy).

Other Incentives: Illinois offers a number of innovative programs to augment conventional sources of financing and help with business locations, relocations, and expansions, including The Technology Venture Investment Program (TVIP), the Large Business Development Program, and others.

Business Incentives: DCEO's Bureau of Business Development administers a wide array of programs and services designed to help Illinois businesses thrive in today's economy. We offer expansion incentives, technology support services, access to capital, global marketing expertise, or job training and education for workers.

Primary Source: State of Illinois Business Portal, <http://business.illinois.gov/assistance.cfm>

Local Economic Development Incentives

[Enterprise Zone Program](#)

An Enterprise Zone is a specially designated area in which tax incentives and direct financial assistance are provided. The Enterprise Zone provides property tax abatements as well as other tax credits and tax exemptions to businesses located within the Enterprise Zone. For more information on the Enterprise Zone Program click on the heading above. To check and see whether a property is located within the Danville-Tilton-Vermilion County Enterprise Zone click [here](#).

[Tax Increment Financing](#)

Tax Increment Financing (TIF) is a financing tool available to local governments to spur economic development and revitalization of blighted areas. The City of Danville has two new recently adopted TIF Districts. ([more](#))

Special Service Areas

Special Services Areas are formed to finance the provision of additional or enhanced services, improvements, or a facility in a specific area in the community. Danville currently has two special service areas. SSA1 covers the Downtown area, with revenues going toward Downtown Danville Inc. for downtown revitalization activities. SSA2 covers the Eastgate Industrial Park area and was put in place to fund infrastructure improvements related to the development of the Eastgate Industrial Park.

Small Business Revolving Loan Fund

The Small Business Revolving Loan Fund is designed to provide low interest loans to small business owners to help them establish a business and/or assist established small businesses in growing their business.

Facade Loan Program

The Facade Loan Program is designed to encourage owners of historical buildings in the downtown area to restore the facade of their buildings to their original luster.

Source: <http://www.cityofdanville.org/departments/public-development/>

City of Danville Public Development Department, Community Development Division

The Community Development Division of the City of Danville Public Development Department is responsible for a variety of programs and initiatives designed to advance the overall health and viability of the City's residential neighborhoods. Federal and State grant programs aimed at these objectives are utilized by Community Development.

Community Development Block Grant This federal funding source provides the following activities supervised by the Community Development Division:

- Owner-occupied housing rehabilitation for low-moderate income families in targeted areas
- Accessibility modifications in homes of low-moderate persons with mobility and/or sensory disabilities
- Rehabilitation assistance for non-profits providing housing for the homeless and special needs populations
- Economic Development grants and loans which create or retain jobs for low income workers
- Replacement of sanitary sewer systems
- Replacement of public infrastructure in support of affordable housing

HOME Program Another federal source for grants and loans to further safe, decent and affordable housing, made available through the Illinois Housing Development Authority. Community Development often applies for these funds in the fall of the year with programs ready to launch in spring.

- The Small Rental Properties Program (SRPP) can provide up to \$15,000 per unit to rehabilitate affordable rental housing
- Homebuyer's Assistance, (presently not funded in Danville), assists moderate-income families in purchasing their own home

Historic Preservation Danville has its own Historic Preservation Ordinance and is recognized as a Certified Local Government by the Illinois Historic Preservation Agency. This status, conferred to local governments through states and recognized by the National Trust for Historic Preservation makes preservation information and resources available to us. The Community Development Manager, Mr. John Dreher, acts as Danville's historic preservation planner. A seven member Commission made up of local volunteers appointed by the Mayor meet on the second Thursday of each month at 5:00 p.m. at the Municipal Building to address preservation concerns.

New Day Initiative This newest of revitalization programs maintained by the City provides support and incentives for the construction of new housing on vacant properties in Danville's traditional neighborhoods. Fee waivers, forgiveness of past fines and liens and help with lot clearance and infrastructure improvements are all part of the negotiable package the City of Danville is willing to provide to the new home builder.

Neighborhood Association Building Community Development staff assist any interested citizens in forming neighborhood associations. Specific "best practices" advice is available, along with staff assistance for start-up. Information on the benefits of forming an association and recommendations for success are available. A list of contacts and area maps for existing associations is available [here](#).

Lead Poisoning Prevention There are two Lead Risk Assessors, licensed by the Illinois Department of Public Health, currently on the Community Development staff who provide training and advice for citizens in reducing risks presented by the disturbance of lead-based paint. Educational materials, how-to advice and testing to determine if dangerous concentrations of lead are present are available to Danville residents.

Source: Community Development <http://www.cityofdanville.org/departments/public-development/>

Costs & Availability of Sites and Buildings

A complete, searchable listing of our available sites and buildings is managed through [Location One](#). Follow the link on our web site to explore our listings.

Operating Conditions

Unemployment Rates for Vermilion County and City of Danville (previous 6 months)

	Rate for Vermilion County	Rate for City of Danville
February 2012	11.1%	10.6%
January 2012	11.6%	11.4%
December 2011	10.3%	11.1%
November 2011	9.9%	10.9%
October 2011	10.8%	12.5%
September 2011	10.3%	11.8%

Workforce Information Update & Charts

A PDF is available from our web site with charts and data from the Illinois Department of Employment Security Economic Information and Analysis Division depict the composition of the local economy and the dramatic strengthening of the job base that has occurred over the last couple of years.

Projected Manufacturing Growth

Local projections compared to State of Illinois and national projections - Manufacturing Cluster

Position	Vermilion County Projections from Jan. 2009 to Jan. 2011	State of Illinois		U.S. Bureau of Labor Statistics Projections to 2014
		Projections 2004-2014	Estimated Annual % of Growth	
Machine – Operator	364	238	2.27	Grow more slowly than average
Maintenance Technician	31	19,748	8.86	Grow as fast as the average
General Labor	20	2,116	6.92	Grow more slowly than average
Mechanic – Industrial Machinery	16	1,105	11.43	Grow as fast as the average
Sheet Metal Worker	15	1,139	15.45	Grow about as fast as the average
Engineers	12	5,692	10.70	Grow about as fast as the average
Supervisor - First Line	10	7,037	10.81	Fast growth rate

Average Commuting Patterns for Workforce

United States	25.5 minutes
Midwest	24.0 minutes
Indiana	22.6 minutes
Illinois	28.0 minutes
Vermilion County	20.4 minutes

Source: 2000 Census

Current Experienced Labor Force in Vermilion County

Management, Business & Financial Workers	2,811
Science, Engineering & Computer Professionals	606
Healthcare Practitioner Professionals	1,077
Other Professional Workers	3,279
Technicians	836
Sales Workers	3,414
Administrative Support Workers	6,497
Construction and Extractive Craft Workers	1,908
Installation, Maintenance and Repair Craft Workers	2,284
Production Operative Workers	4,602
Transportation and Material Moving Operative Workers	2,628
Laborers and Helpers	2,133
Protective Service Workers	827
Service Workers, except Protective	5,412
Other Occupations	354
Total	38,668

Source: 2000 Special EEO Tabulation File, US Census Bureau

Prepared by Economic Information and Analysis Division, Illinois Department of Employment Security

Full *Workforce Availability Information 2005 Vermilion County, One Source Workforce & Career Information*, Illinois Department of Employment Security document available as PDF download <http://lmi.ides.state.il.us/affaction/Vermilion.pdf>.

Labor Management Relations - Vermilion County, Illinois Union Election Data/Trends

In brief, 12 elections, including 7 lost involving 337 employees and 5 won involving 114 employees.

Year	Union/Company	Vote for	Voted against	Vote challenged	# of employees	Petitioner status
2008	No petitions for unionization were filed	0	0	0	0	
2007	No petitions for unionization were filed	0	0	0	0	
2006	Int'l Union, UAW Local 579, Time-O-Matic	21	12	1	33	Won
	Service Employees Int'l Union Local 880, Help at Home, Inc.	32	7	2	47	Won
	Teamsters Local 26, First Student, Inc.	45	30	1	79	Won
	Teamsters Local 26, Earl Gaudio & Son, Inc.	3	8	0	12	Lost
2005	No petitions for unionization were filed	0	0	0	0	
2004	Teamsters Local 26, Silgan Container Corp.	21	86	0	110	Lost
2003	Teamsters Local 26, Hawkeye Foodservice Distribution	5	12	0	19	Lost
2002	Int'l Assoc. Machinists/ThyssenKrupp Gerlach Co.	28	60	0	91	Lost
	IBEW Local 538/Digital Communications	4	5	0	10	Lost
	IBEW Local 538/Life Safety Design	5	1	0	6	Won
	Teamsters Local 26/Pepsi-Cola	10	13	0	24	Lost
	Teamsters Local 26/Jackson Plastics	31	18	0	54	Won <i>Business Now Closed</i>
2001	Teamsters/Meat Plus, Inc.	1	5	2	8	Lost
	Teamsters/CRIS Senior Services	9	0	0	11	Won <i>Decert in Jan 2004</i>
	Teamsters/Pepsi Bottlers	14	19	0	25	Won
	Teamsters/Allied Waste	11	5	1	18	Won
	Teamsters/Jackson Plastics	22	53	0	75	Lost
2000	No petitions for unionization were filed	0	0	0	0	
TOTALS		161	277	3	451	

Source: National Labor Relations Board, Peoria, IL. Additional years of historical data available upon request.

Work Stoppage Data

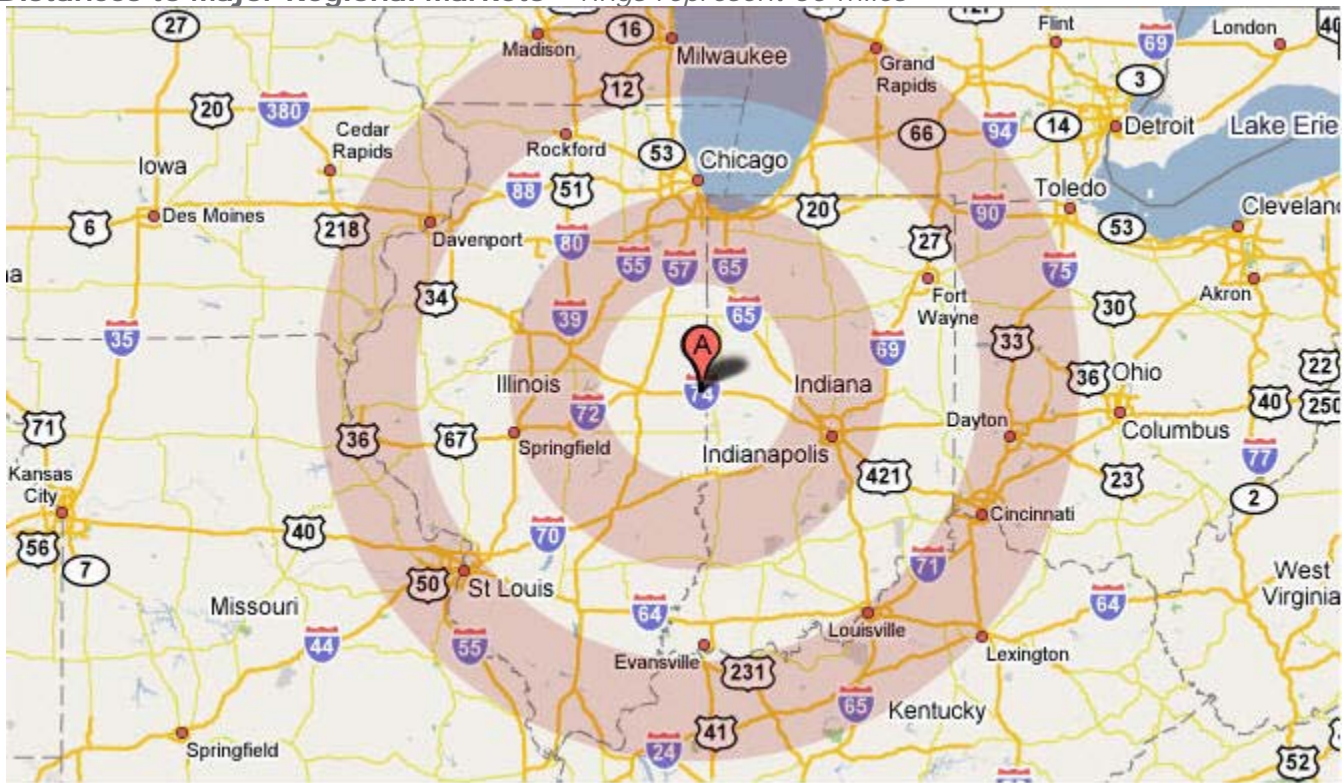
Year	Company	Union	Employees Idled	Start Date	End Date	Total Days
2008	No stoppages					
2007	No stoppages					
2006	No stoppages					
2005	ThyssenKrupp Forge	UAW Local 2128	160	5/11/05	6/25/05	45
2004	Vermilion County	IBEW	62	7/30/04	8/21/04	22
2003	No stoppages					
2002	No stoppages					
2001	Bunge Lauhoff Grain	PACE	194	5/17/01	8/4/01	89
2000	ThyssenKrupp Forge	UAW	168	5/11/00	5/26/00	15

Source: Illinois Dept. of Commerce & Economic Opportunity

Distances to Major Regional Markets

Chicago, IL	125 miles
Cincinnati, OH	260 miles
Columbus, OH	258 miles
Des Moines, IA	382 miles
Detroit, MI	379 miles
Indianapolis, IN	88 miles
Kansas City, KS	437 miles
Louisville, KY	202 miles
Milwaukee, WI	222 miles
Minneapolis, MN	533 miles
St. Louis, MO	198 miles
TriCities IL/IA	215 miles

Distances to Major Regional Markets – rings represent 50 miles



Base map provided by [Google](#).

Highway Access

State Routes	US Routes	Interstates
1	150	74
	136	57
	41	72
	63	
	45	

Rail Carriers

	North/South	East/West
Mainline	CSX Transportation Union Pacific (northeast)	Norfolk-Southern Union Pacific (southwest)
Branchline	Kankakee Beaverville Southern (KBS)	



Source: Illinois Department of Transportation (Head to <http://www.dot.state.il.us/officialrailmap.pdf> for full map of Illinois in PDF format)

Regional Air Service



Base map provided by [Google](#).

Regional Airports: Vermilion County Airport

Commercial Airport:	Vermilion County Airport, Danville, Illinois (DNV) www.airnav.com/airport/DNV
Type of runway:	Asphalt
Length of longest runway:	6,000 feet
Instrument landing system:	Wilcox Mark I-D with glide slope indicators; RNAV approach; VOR approach
Lighting system:	Mike-a-lite/pilot radio activated
Hangars:	Yes
Freight service:	United Parcel Service; Aero Charter Express

Regional Airports: University of Illinois/Willard

Commercial Airport:	University of Illinois/Willard Airport, Champaign, Illinois (CMI) www.flycmi.com
Type of runway:	Concrete and asphalt
Lengths of runways:	8,300 ft., 6,500 ft., 5,300 ft.
Control tower:	6:00 am through 11:00 pm
Lighting system:	Tower controlled, pilot controlled
Hangars:	Yes
Service:	5 a.m.-10 p.m. aircraft maintenance & fuel service
Driving distance/time from Danville, Illinois:	Approximately 45 miles / Approximately 45 minutes
Passenger service:	American Eagle: 3 departures and 3 arrivals per day (service to O'Hare International Airport) 1 departure and arrival per day (service Dallas/Fort Worth International Airport) Northwest Airlink: 2 departures and 2 arrivals per day (service to Detroit, MI)

Regional Airports: Bloomington

Commercial Airport: Central Illinois Regional Airport, Bloomington, Illinois (BMI)
www.cira.com

Type of runway: Concrete and asphalt

Lengths of runways: 8,000 ft., 6,525 ft.

Control tower: 6:00 am through 10:00 pm

Lighting system: Tower controlled, pilot controlled

Hangars: Yes

Service: 24 hour aircraft maintenance & fuel service

Driving distance/time from Danville, Illinois: Approximately 80 miles / Approximately 90 minutes

Passenger service: Airtran: 1 departure and arrival 4 times a week-Tues.-Thur., Sat. & Sun. (service to Orlando International Airport); 3 departures and arrivals per day (service to Atlanta International Airport)

Regional Airports: Indianapolis International

International Airport: Indianapolis International Airport, Indianapolis, Illinois (IND)
www.indianapolisairport.com

Driving distance/time from Danville, Illinois: Approximately 88 miles / Approximately 90 minutes

Passenger service:

Air Canada	2 departures daily
Airtran Airways	10 departures daily
American Airlines	19 departures daily
Continental Airlines	14 departures daily
Delta Airlines	13 departures daily
Frontier	3 departures daily
Midwest Connect	3 departures daily
Northwest	36 departures daily
Southwest Airlines	21 departures daily
United Airlines	15 departures daily
US Airways	26 departures daily

Quality of Life

Parks, Recreation and Events

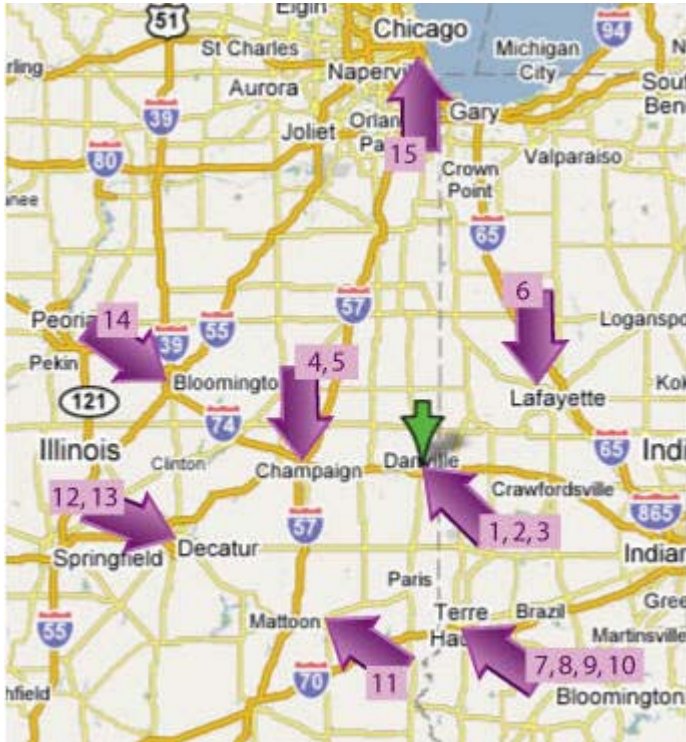
Visit the Danville Area Convention & Visitors' Bureau website at <http://www.danvillecvb.com/> for a comprehensive listing of local attractions including museums, fairs, festivals, sports, arts, recreation, entertainment, antiquing, and shopping.

Colleges and Universities

School	Location	Distance to Danville (miles)
1. Danville Area Community College www.dacc.edu	Danville, IL	
2. Lakeview College of Nursing www.lakeviewcol.edu	Danville, IL	
3. Provena United Samaritans Medical Center School of Radiologic Technology	Danville, IL	
4. University of Illinois www.uiuc.edu	Champaign-Urbana, Illinois	30
5. Parkland College http://www.parkland.edu	Champaign-Urbana, Illinois	30
6. Purdue University www.purdue.edu	West Lafayette, Indiana	45
7. Indiana State University www.indstate.edu	Terre Haute, Indiana	59
8. Indiana Vocational Technical College www.ivytech7.cc.in.us	Terre Haute, Indiana	59
9. Rose-Hulman Institute of Technology www.rose-hulman.edu	Terre Haute, Indiana	59
10. St. Mary's of the Woods College www.smwc.edu	Terre Haute, Indiana	59
11. Eastern Illinois University www.eiu.edu	Charleston, Illinois	70
12. Illinois State University www.ilstu.edu	Bloomington-Normal, Illinois	80
13. Illinois Wesleyan University www.iwu.edu	Bloomington-Normal, Illinois	80
14. Millikin University www.millikin.edu	Decatur, Illinois	98
15. DePaul University www.depaul.edu	Chicago, Illinois	112

Map of regional higher education institutes

Schools are noted using the numbering from the chart above.



Base map provided by [Google](http://www.google.com).

Vermilion County Secondary School Scores (ACT)

	2004/05		2005/06		2006/07		2007/08		2008/09	
Bismarck-Henning	State	BHS	State	BHS	State	BHS	State	BHS	State	BHS
English	19.6	20.4	20	21.7	20	18.4	20.1	20	20.2	20.3
Math	20.1	18.7	20.2	20.8	20.3	18.1	20.6	19.5	20.6	18.9
Reading	20	20	20.4	22.6	20.2	18.3	20.4	20.4	20.5	20.4
Science Reasoning	20.2	19.8	20.2	21.8	20.2	18.1	20.3	20	20.5	19.8
# Taking Test	---	61	---	*	---	*	---	*	---	*
% of Class	---	92.4	---	*	---	*	---	*	---	*
Composite Score	20.1	19.8	20.3	21.2	20.3	18.4	20.5	20.2	20.6	20
Catlin	State	CHS	State	CHS	State	CHS	State	CHS	State	CHS
English	19.6	17.6	20	18.9	20	20	20.1	21.3	20.2	20.5
Math	20.1	20	20.2	19.4	20.3	21	20.6	21.5	20.6	20/3
Reading	20	17	20.4	19.1	20.2	20.4	20.4	22.2	20.5	20.5
Science Reasoning	20.2	18.8	20.2	18.5	20.2	20.6	20.3	20.5	20.5	19.8
# Taking Test	---	44	---	*	---	*	---	*	---	*
% of Class	---	89.8	---	*	---	*	---	*	---	*
Composite Score	20.1	18.5	20.3	19.1	20.3	20.7	20.5	21.4	20.6	20.4

(continued on next page)

Danville	State	DHS	State	DHS	State	DHS	State	DHS	State	DHS
English	19.6	18.6	20	18.3	20	17.7	20.1	17.8	20.2	18.6
Math	20.1	18.2	20.2	18.3	20.3	18.1	20.6	18.5	20.6	19.1
Reading	20	19	20.4	18.8	20.2	18.4	20.4	18.5	20.5	18.9
Science Reasoning	20.2	18.9	20.2	18.9	20.2	18.8	20.3	19	20.5	18.8
# Taking Test	---	312	---	*	---	*	---	*	---	*
% of Class	---	96.9	---	*	---	*	---	*	---	*
Composite Score	20.1	18.8	20.3	18.7	20.3	18.4	20.5	18.9	20.6	19
Georgetown-Ridge Farm	State	G-RF HS	State	G-RF HS	State	G-RF HS	State	G-RF HS	State	G-RF HS
English	19.6	18.1	20	19.1	20	18.7	20.1	17.5	20.2	18.6
Math	20.1	18.4	20.2	20.2	20.3	19.2	20.6	19.8	20.6	19.7
Reading	20	19.7	20.4	19.7	20.2	19.1	20.4	19	20.5	19.6
Science Reasoning	20.2	19.3	20.2	20	20.2	18.7	20.3	18.7	20.5	18
# Taking Test	---	67	---	*	---	*	---	*	---	*
% of Class	---	98.5	---	*	---	*	---	*	---	*
Composite Score	20.1	19	20.3	19.9	20.3	19.1	20.5	18.9	20.6	19.1
Hoopeston	State	HAHS	State	HAHS	State	HAHS	State	HAHS	State	HAHS
English	19.6	19.5	20	18.5	20	20.6	20.1	18.2	20.2	17.1
Math	20.1	18.9	20.2	18.4	20.3	19.8	20.6	18.5	20.6	18.4
Reading	20	20.3	20.4	18.7	20.2	20.7	20.4	18.4	20.5	18.5
Science Reasoning	20.2	19.6	20.2	19.3	20.2	19.9	20.3	18.8	20.5	18.2
# Taking Test	---	72	---	*	---	*	---	*	---	*
% of Class	---	75	---	*	---	*	---	*	---	*
Composite Score	20.1	19.7	20.3	18.8	20.3	20.4	20.5	18.6	20.6	18.3
Jamaica	State	JHS	State	JHS	State	JHS	State	JHS	State	JHS
English	19.6	18.5	20	21.2	20	19	20.1	20.2	20.2	18.8
Math	20.1	17.4	20.2	20.8	20.3	18.9	20.6	20.3	20.6	19.4
Reading	20	19.7	20.4	21.4	20.2	18.7	20.4	21.5	20.5	19.1
Science Reasoning	20.2	19.5	20.2	21.8	20.2	19.1	20.3	20	20.5	18.8
# Taking Test	---	30	---	*	---	*	---	*	---	*
% of Class	---	100	---	*	---	*	---	*	---	*
Composite Score	20.1	18.9	20.3	21.4	20.3	19	20.5	20.7	20.6	19.2
<i>(continued on next page)</i>										

Oakwood	State	OHS	State	OHS	State	OHS	State	OHS	State	OHS
English	19.6	18.5	20	18.8	20	19.4	20.1	21	20.2	19.8
Math	20.1	18.4	20.2	18.4	20.3	18.3	20.6	19.6	20.6	20.4
Reading	20	20	20.4	19.8	20.2	19.7	20.4	20.6	20.5	20.1
Science Reasoning	20.2	19	20.2	19.4	20.2	19.3	20.3	20.2	20.5	20.4
# Taking Test	---	50	---	*	---	*	---	*	---	*
% of Class	---	92.6	---	*	---	*	---	*	---	*
Composite Score	20.1	19.1	20.3	19.2	20.3	19.3	20.5	20.5	20.6	20.3
Schlarman	State	SHS	State	SHS	State	SHS	State	SHS	State	SHS
English	19.6	22.6	20	22.3	20	23.1	20.1	23.2	20.2	23.2
Math	20.1	21.2	20.2	21.4	20.3	22.3	20.6	20.4	20.6	21.4
Reading	20	22.7	20.4	23.6	20.2	23.6	20.4	23.4	20.5	23.7
Science Reasoning	20.2	21.3	20.2	21.9	20.2	23.2	20.3	20.3	20.5	22.7
# Taking Test	---	36	---	*	---	*	---	*	---	*
% of Class	---	72	---	*	---	*	---	*	---	*
Composite Score	20.1	22.1	20.3	22.3	20.3	23.2	20.5	22	20.6	22.9
Westville	State	WHS	State	WHS	State	WHS	State	WHS	State	WHS
English	19.6	18.1	20	18.1	20	19.1	20.1	18.1	20.2	18.3
Math	20.1	17.9	20.2	17.1	20.3	18.7	20.6	18.7	20.6	19.1
Reading	20	19.6	20.4	19.1	20.2	20	20.4	19.3	20.5	19.1
Science Reasoning	20.2	19.2	20.2	19.1	20.2	19.3	20.3	19.1	20.5	19
# Taking Test	---	63	---	*	---	*	---	*	---	*
% of Class	---	94	---	*	---	*	---	*	---	*
Composite Score	20.1	18.8	20.3	18.4	20.3	19.4	20.5	19	20.6	19

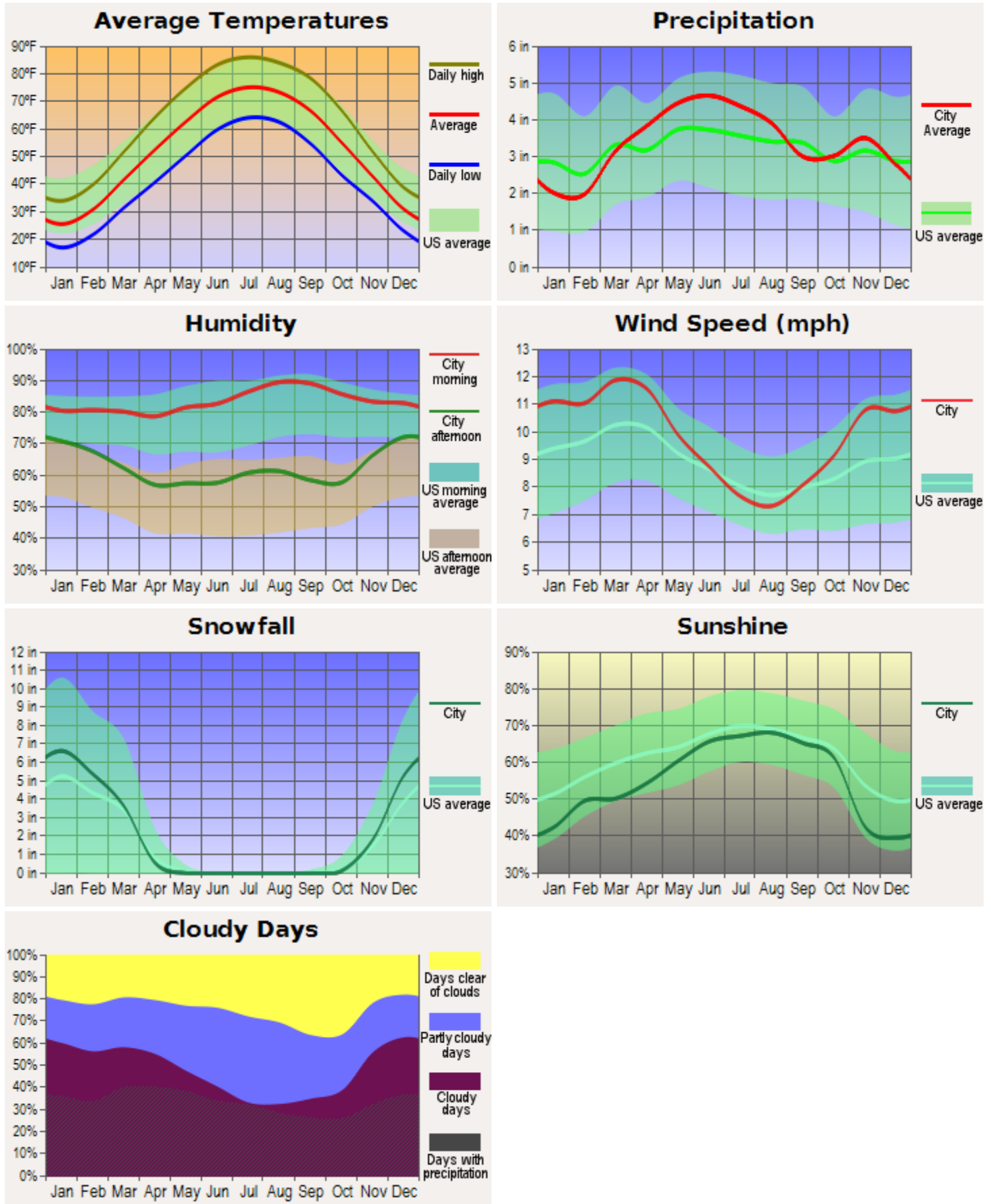
ACCRA Cost of Living Index – Annual Average 2011

Comparative Data for 297 Urban Areas - The ACCRA Cost of Living Index measures relative price levels for consumer goods and services in participating areas. The average for all participating places, both metropolitan and nonmetropolitan, equals 100, and each participant's index is read as a percentage of the average for all places. Full PDF report on our website.

Danville, Illinois

100% Composite Index	90.5%
Grocery Items	92.6%
Housing	70.6%
Utilities	116.5%
Transportation	113.5%
Health Care	97.6%
Misc. Goods & Services	90.3%

Climate and Weather



Source: <http://www.city-data.com>

Healthcare Resources and Facilities in Vermilion County

Hospitals

Number of Beds

Hoopeston Community Memorial Hospital	25
Hoopeston Community Memorial Nursing Home	75
Hoopeston Community Memorial Assisted Living	30
Provena United Samaritans Medical Center	210
Veteran's Administration Hospital	199
Veteran's Administration Nursing Home	223

Medical Facilities

Carle Clinic-Danville	
Chittick Family Eye Care	
Christie Clinic - Danville	
Convenient Care Clinic (Carle)	
Danville Healthcare Surgery Center / eCare	
Danville Polyclinic	
Dillman Eye Care	
Gailey Eye Clinic	
Prairie Center Comprehensive Treatment for Drug & Alcohol Problems	
Planned Parenthood of East Central Illinois	
Regional Cancer Center (Provena)	
Tilton Medical Center	
Urgent Care (Polyclinic)	
Vermilion Area Community Health Center	
Vermilion County Health Department	

Occupational Medicine Services

Carle Clinic-Danville	
Danville Polyclinic	
Provena United Samaritans Medical Center	

Physicians	100
Physician Extenders (includes Physician's Assistants; Nurse/Midwives; Nurse Practitioners; Cert. Reg. Nurse Anesthetists)	43
Dentists	28
Nursing Homes	10